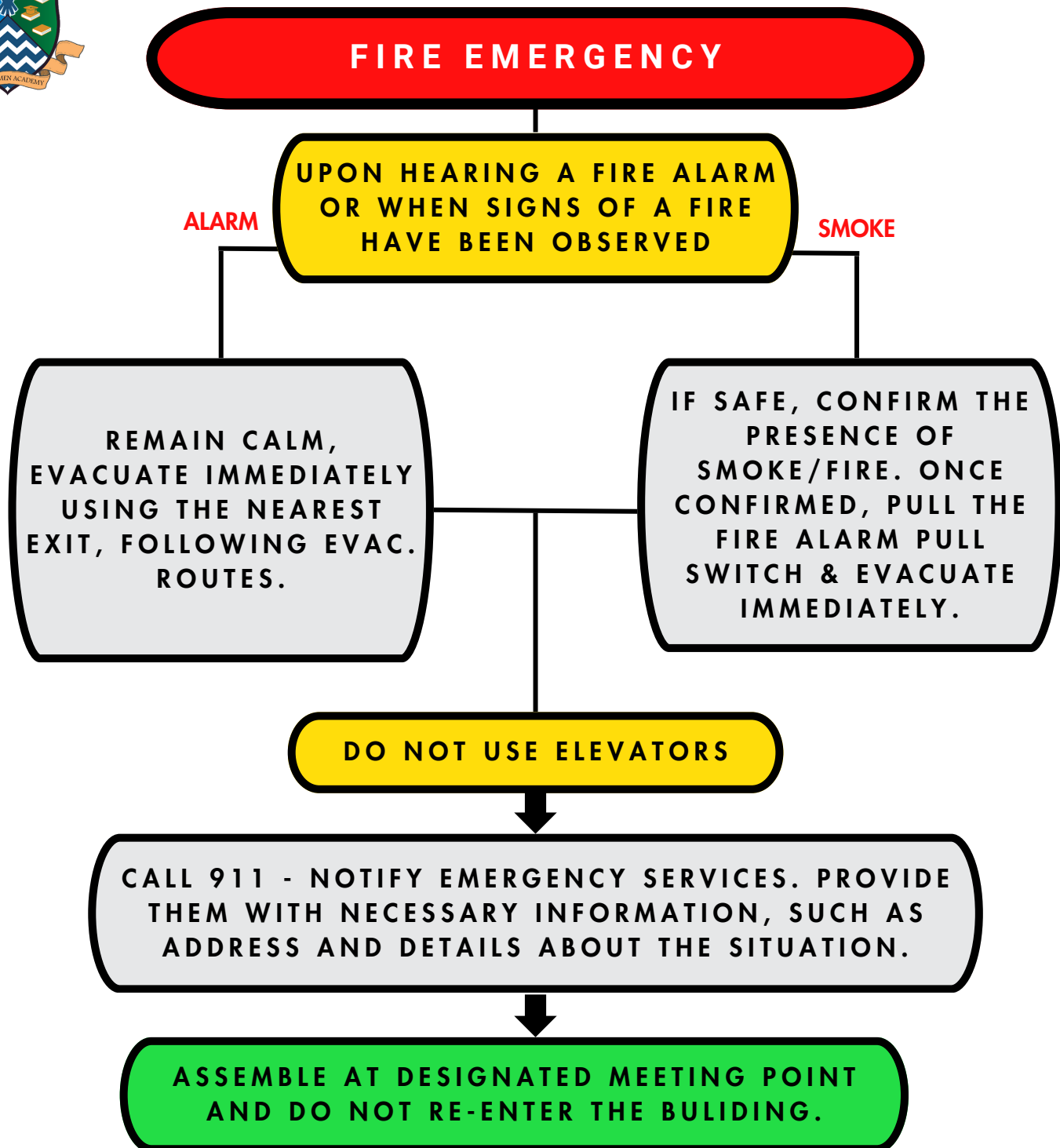


# FIRE EMERGENCY FLOW CHART



## GENERAL 911 QUESTIONS

- LOCATION + MAJOR INTERSECTION
- NATURE OF THE EMERGENCY
- DETAILS ABOUT THE SITUATION
- ARE ANY PERSONS TRAPPED OR UNABLE TO ESCAPE

WHEN CALLING EMERGENCY SERVICES FROM A COLLEGE LANDLINE, DIAL 9-911\*

# MEDICAL EMERGENCY FLOW CHART



## MEDICAL EMERGENCY

ASSESS FOR SIGNS OF A MEDICAL EMERGENCY. FOR INSTANCE, UNCONSCIOUSNESS, DIFFICULTY BREATHING OR SEVERE BLEEDING.

CALL 911 - NOTIFY EMERGENCY SERVICES. PROVIDE THEM WITH NECESSARY INFORMATION, SUCH AS ADDRESS AND DETAILS ABOUT THE SITUATION.

ARE YOU CERTIFIED IN FIRST AID/CPR?

NO

YES

ASSIGN STAFF OR BYSTANDERS TO MANAGE DIFFERENT ASPECTS OF THE EMERGENCY RESPONSE.

INITIATE FIRST AID/CPR WHILE WAITING FOR EMERGENCY MEDICAL SERVICES TO ARRIVE.

LEVERAGE BYSTANDERS AND STAFF TO NOTIFY CAMPUS SECURITY AND MANAGEMENT

CONTACT EMERGENCY CONTACT(S) OF THE AFFECTED PARTY.

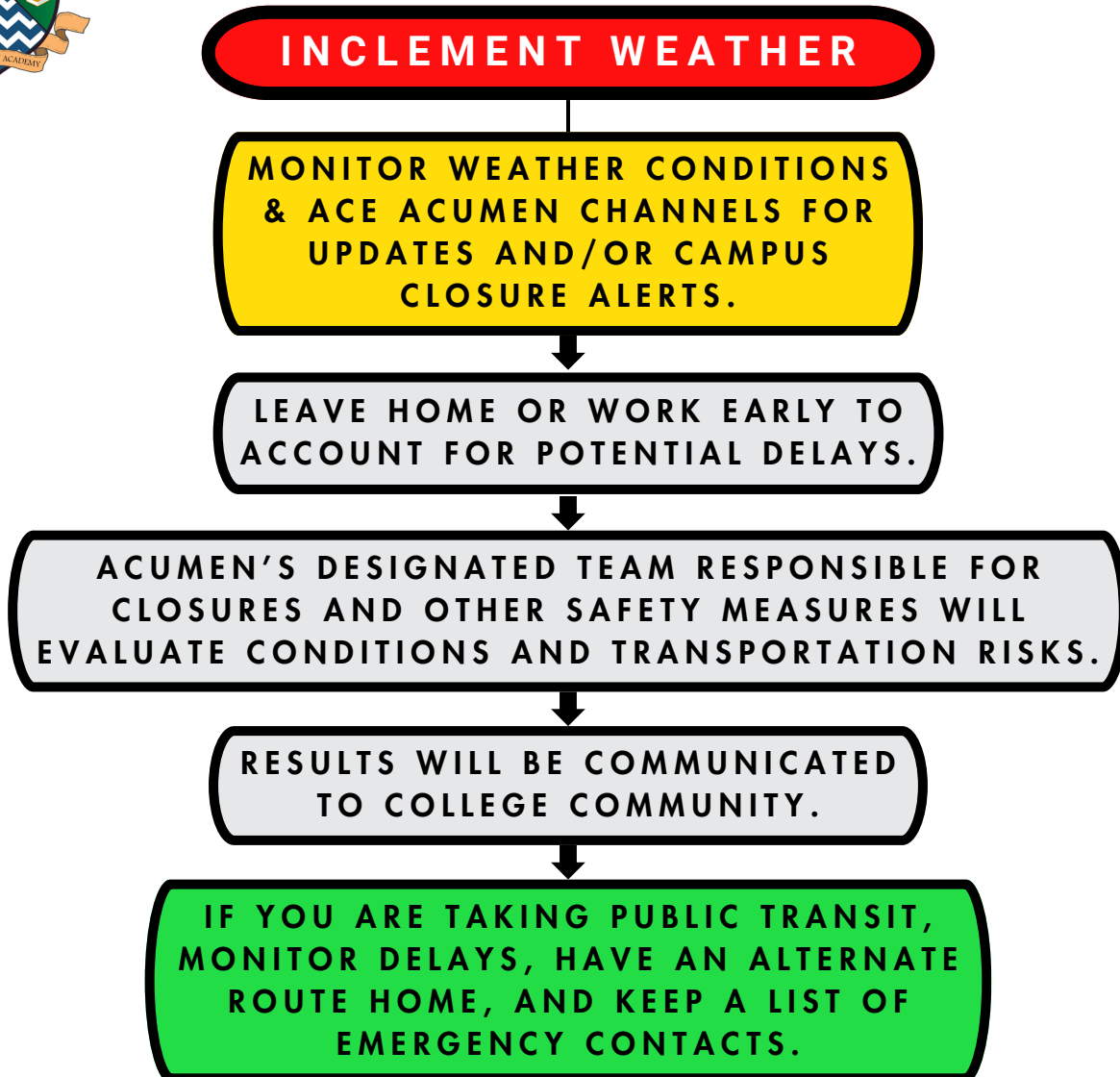
SEND INCIDENT REPORT TO THE CAMPUS SAFETY TEAM.

## GENERAL 911 QUESTIONS

- LOCATION + MAJOR INTERSECTION
- NATURE OF THE EMERGENCY
- DETAILS ABOUT THE SITUATION
- KNOWN MEDICAL HISTORY/PERSCRIPTIONS
- KNOWN MEDICAL DEVICES (EPI-PEN, INHALER, AED DEFIBULATOR, ETC.)

WHEN CALLING EMERGENCY SERVICES FROM A COLLEGE LANDLINE, DIAL 9-911\*

# INCLEMENT WEATHER EMERGENCY FLOW CHART

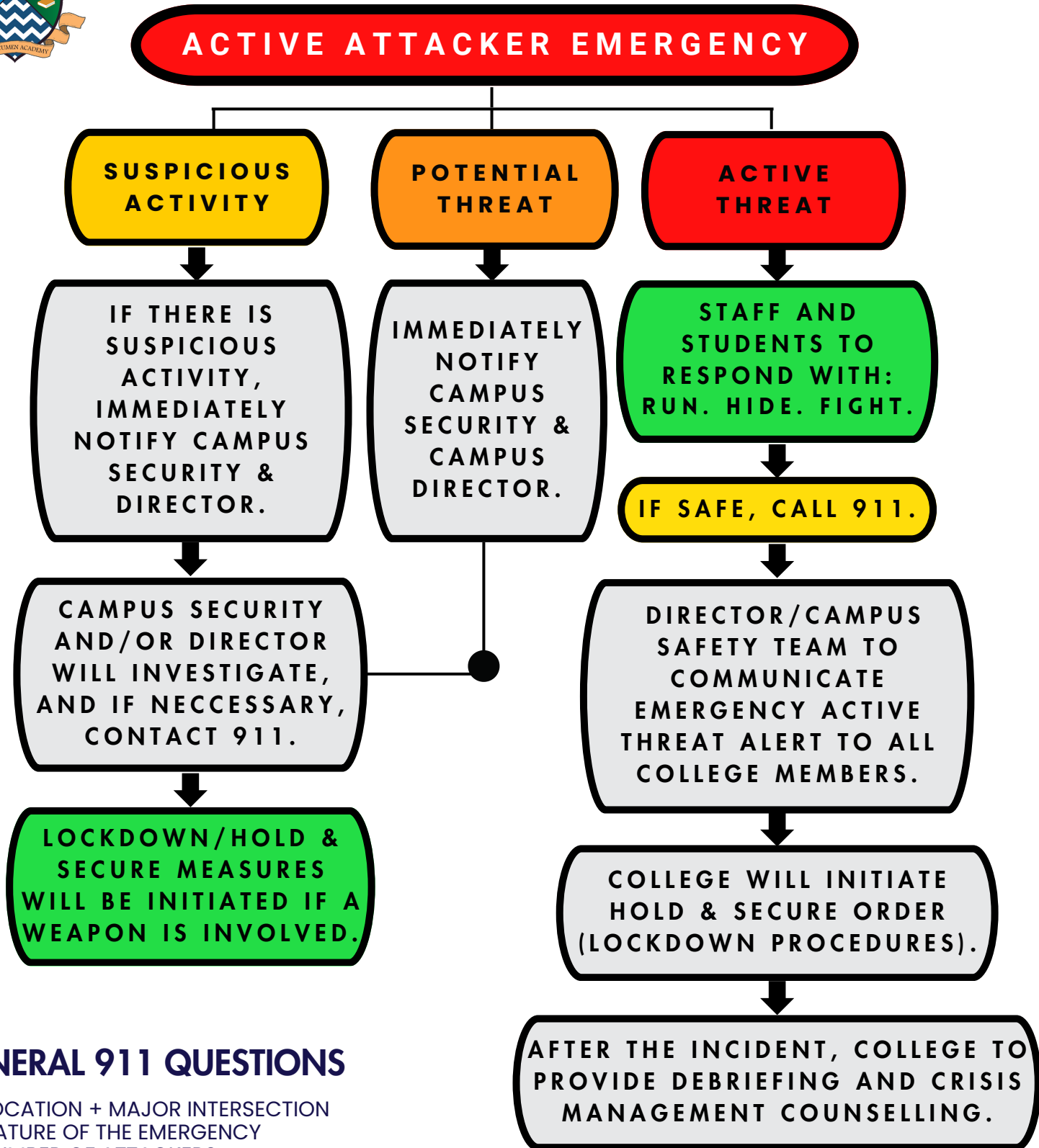


## TYPES OF INCLEMENT WEATHER:

- SEVERE WEATHER EVENTS (MIXED COMBINATIONS)
- EXTREME HEAT WAVES
- COLD SNAPS/EXTREME COLD
- SNOWSTORMS/BLIZZARDS
- RAINSTORMS/FLOODING
- THUNDERSTORMS
- HAIL STORMS
- TORNADOS

WHEN CALLING EMERGENCY SERVICES FROM A COLLEGE LANDLINE, DIAL 9-911\*

# ACTIVE ATTACKER EMERGENCY FLOW CHART



## GENERAL 911 QUESTIONS

- LOCATION + MAJOR INTERSECTION
- NATURE OF THE EMERGENCY
- NUMBER OF ATTACKERS
- DESCRIPTION OF THE ATTACKERS
- ARE THERE ANY HOSTAGES
- WEAPON INFORMATION/GUN SOUNDS

WHEN CALLING EMERGENCY SERVICES FROM A COLLEGE LANDLINE, DIAL 9-911\*